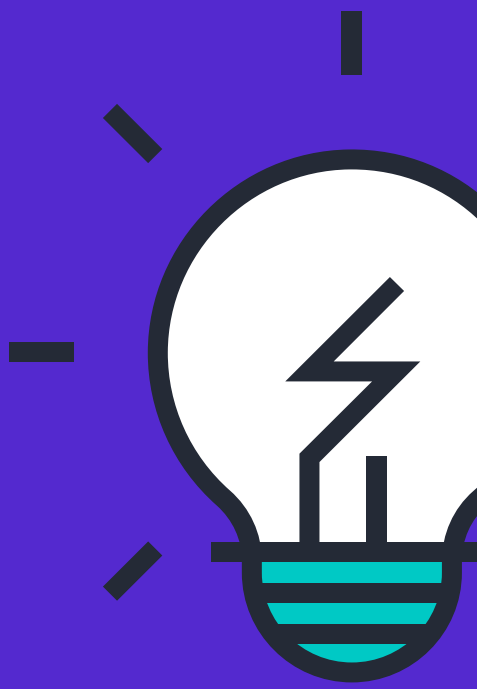
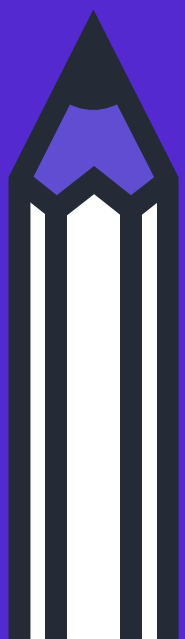
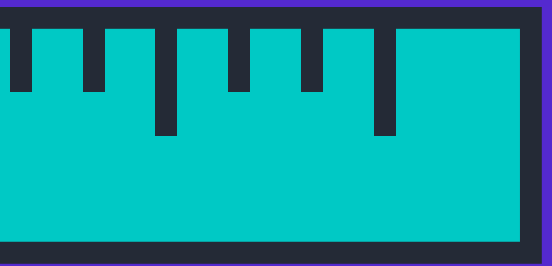
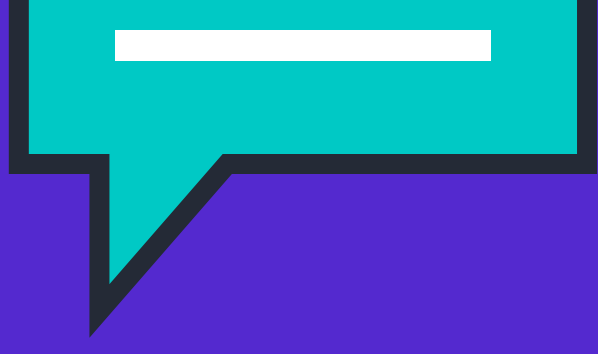


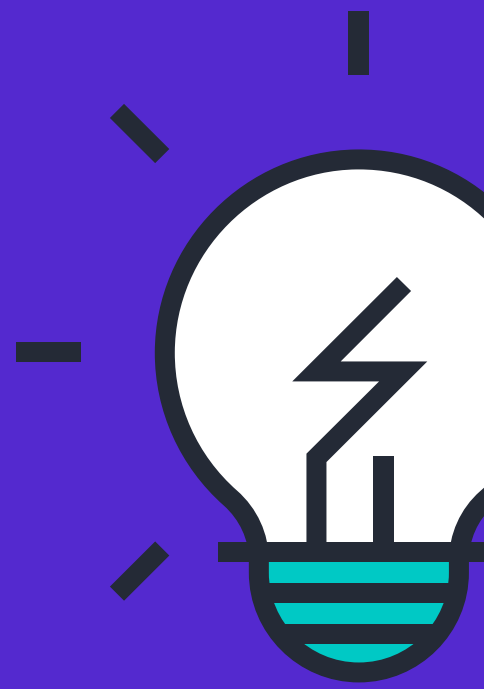
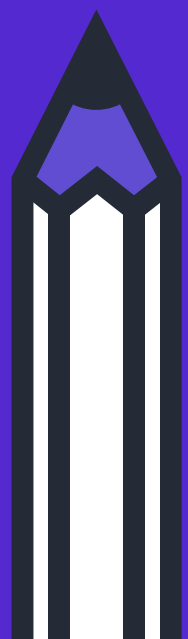
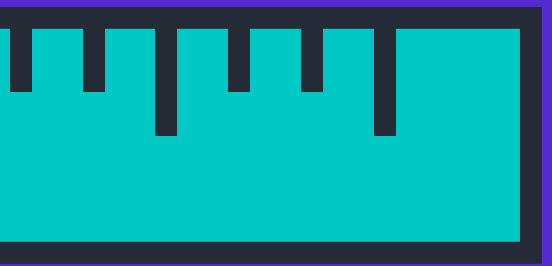
# BUHARA A.L. REHBERLİK SERVİSİ

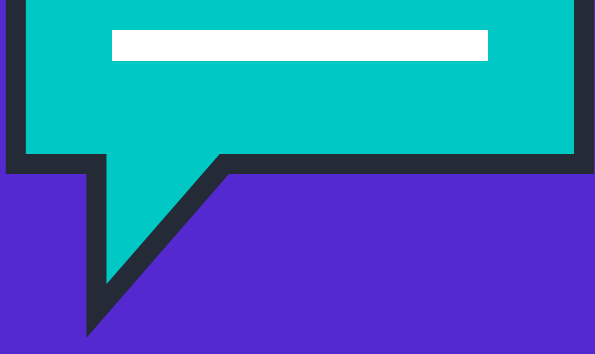
## TEST ÇÖZME TEKNIKLERİ





**Çözdüğünüz her  
sorunun doğru  
çıkması için altın  
kurallar:**



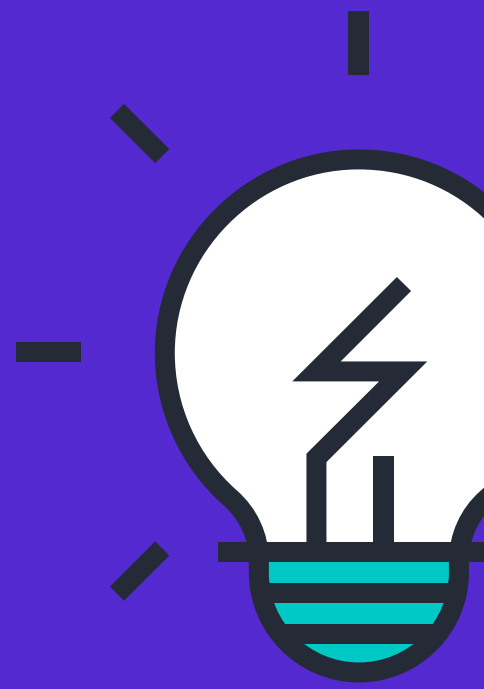
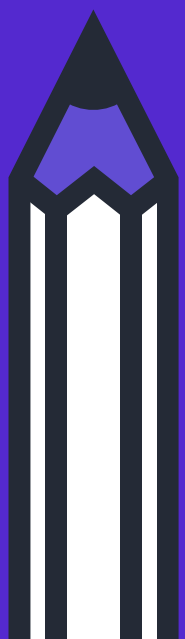
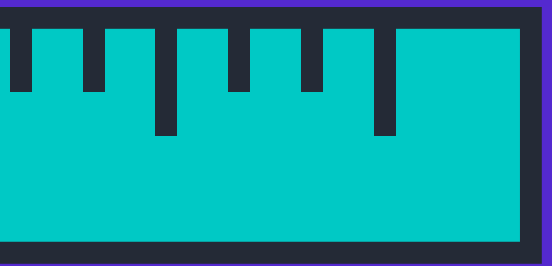


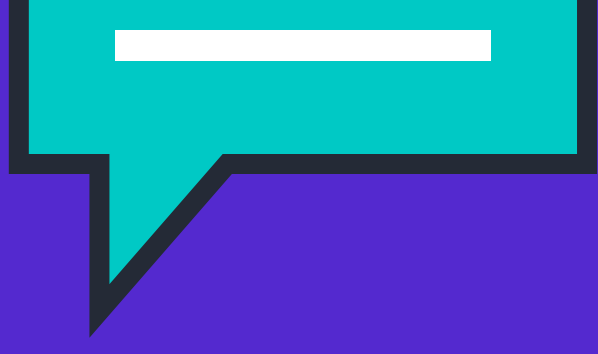
**Soruyu iyice anladıktan  
sonra çözmelisiniz.**

**"Bana bir problem ve  
1 saat süre verilse bu  
sürenin 45 dakikasını  
problemi anlamaya, 10  
dakikasını çözüm  
yolları üretmeye, 5  
dakikasını çözmeye  
ayırırdım.**

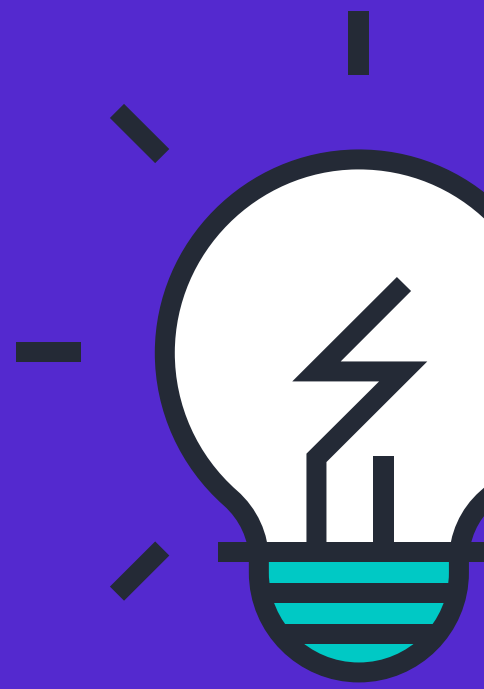
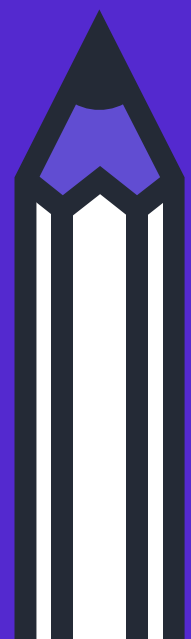
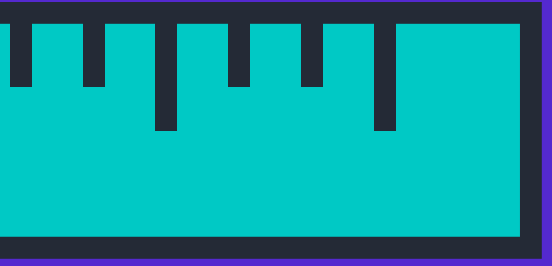
**"**

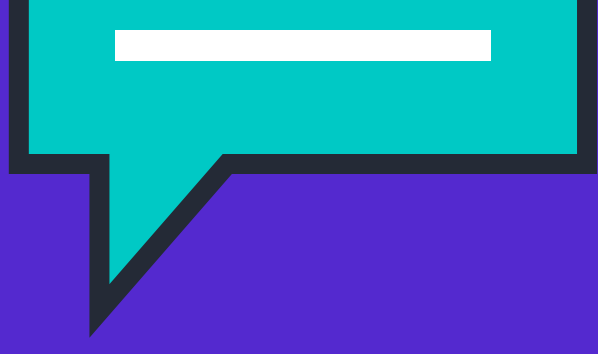
**Albert Einstein**



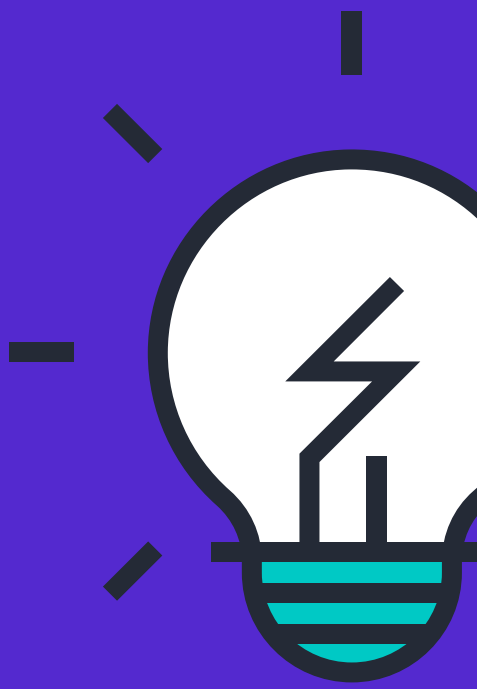
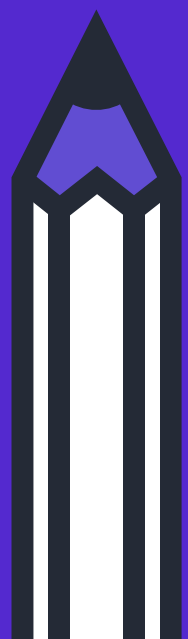
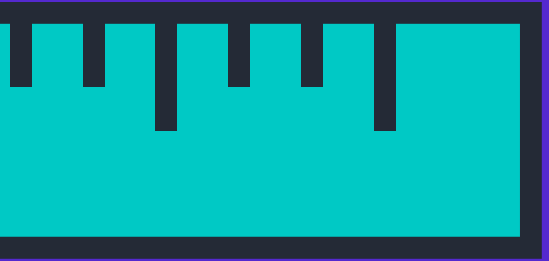


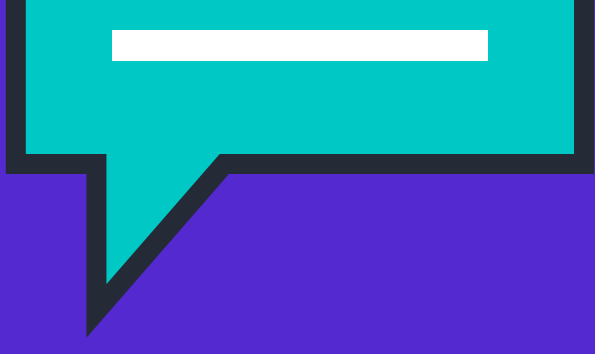
**Bir konuyla ilgili soruları çözümeden önce o konuyu iyi öğrenmelisiniz. Soru çözererek de öğrenip öğrenmediğinizi kontrol etmiş olursunuz.**



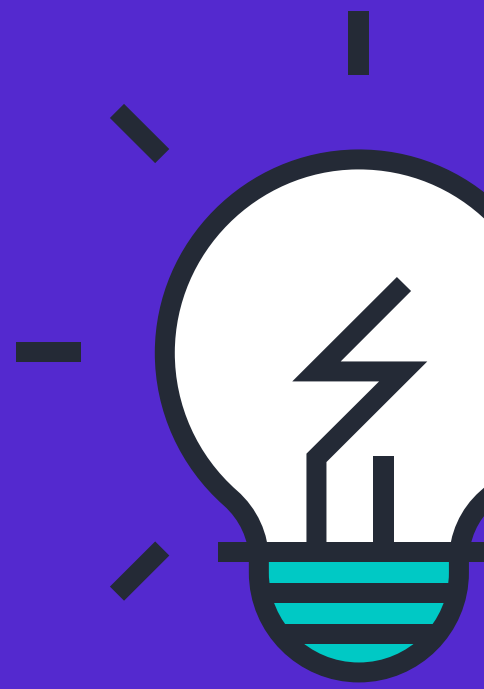
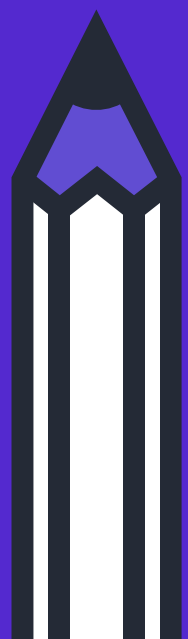
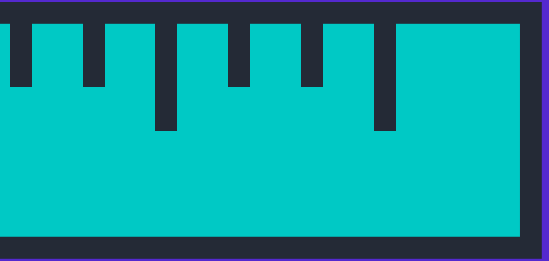


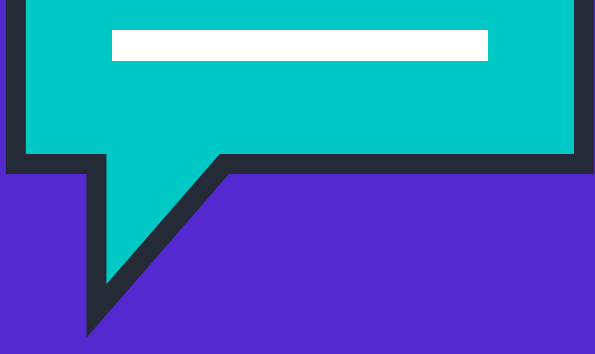
**Her sorunu size sınavda sorulabileceğini düşünerek yanıtlamaya çalışın. Çözemediğiniz veya yanlış çözdüğünüz sorunun mutlaka doğru çözümünü öğrenin.**



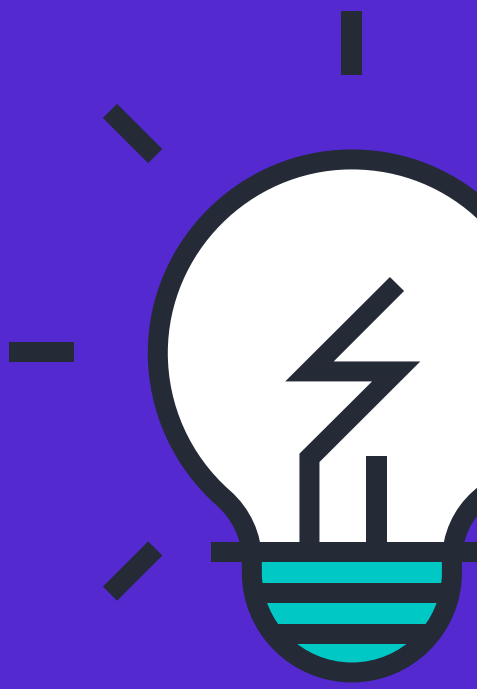
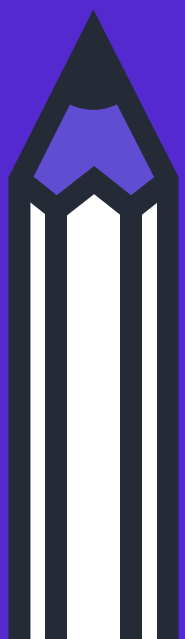
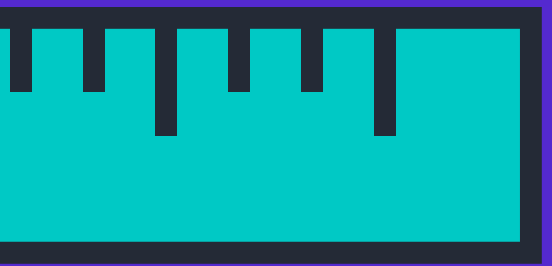


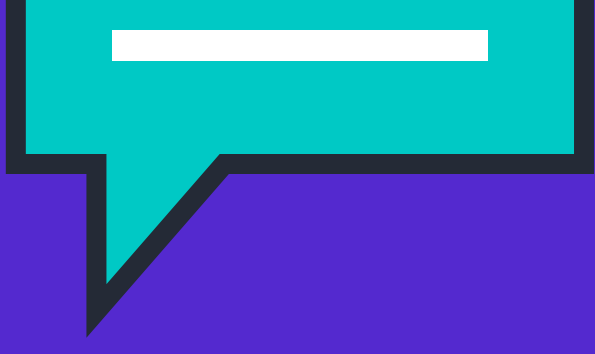
**Her sorunu size sınavda sorulabileceğini düşünerek yanıtlamaya çalışın. Çözemediğiniz veya yanlış çözdüğünüz sorunun mutlaka doğru çözümünü öğrenin.**



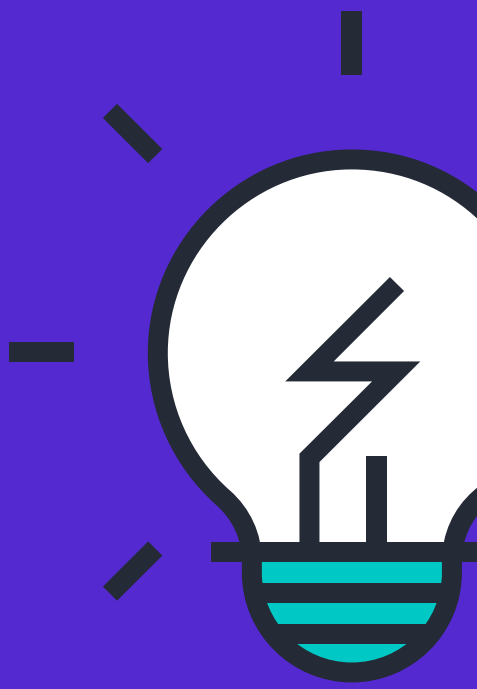
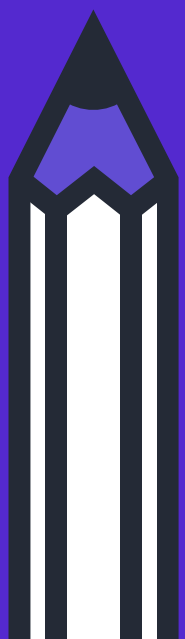
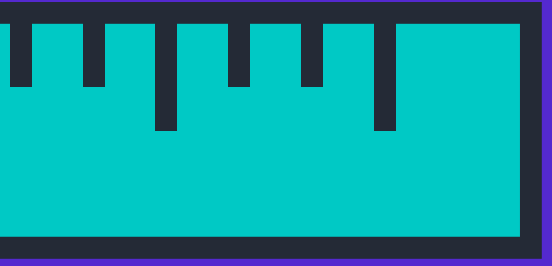


**Soru kökünü ve soru paragrafını anlamadan şıkları okumaya başlamayın. Önce size verilenleri ve sizden istenenleri iyi belirleyin. Bu sizin cevabı daha kısa sürede ve daha doğru bir şekilde bulmanızı sağlayacaktır.**

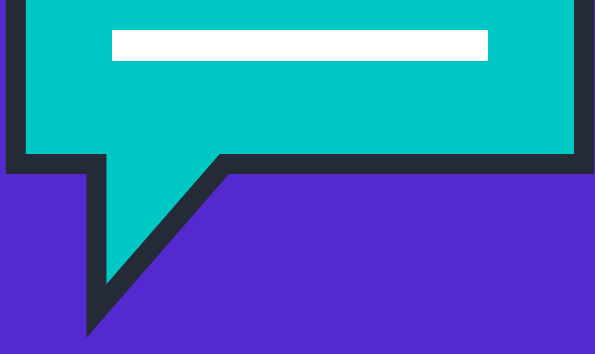




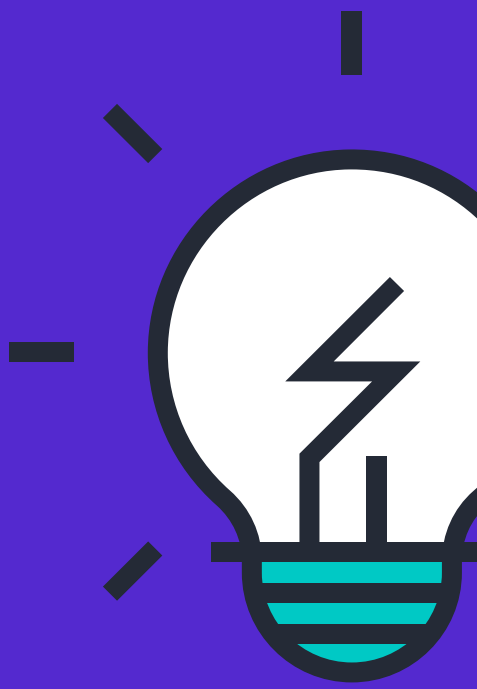
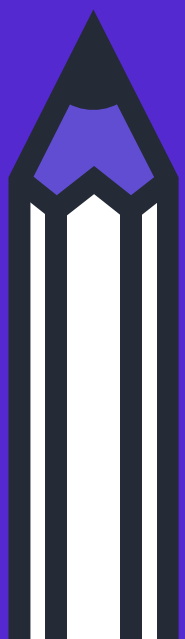
**Soruyu çözmanızı sağlayacak  
soru metninde yer alan önemli  
kelimelerin altını çizin.**

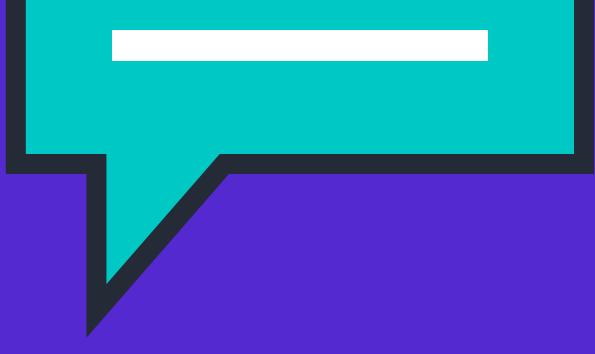




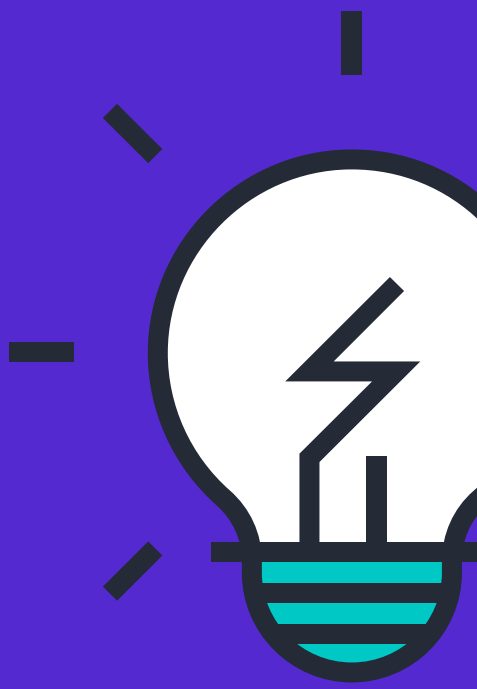
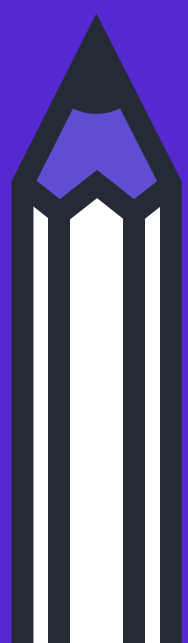
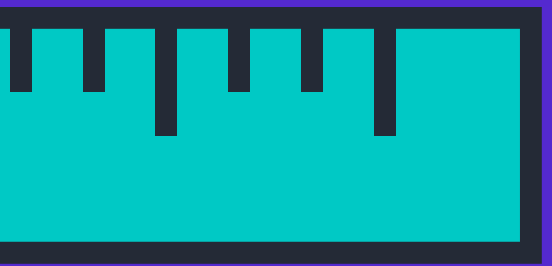


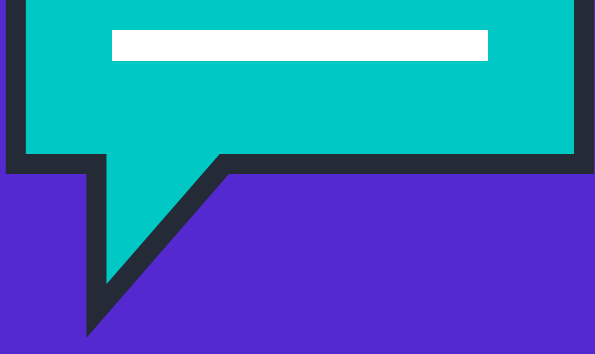
**Bütün şıkları okumadan doğru olduğuna inandığınız şıkkı işaretlemeyin. Çünkü bazı sorular sizden en doğru cevabı bulmanızı ister.**



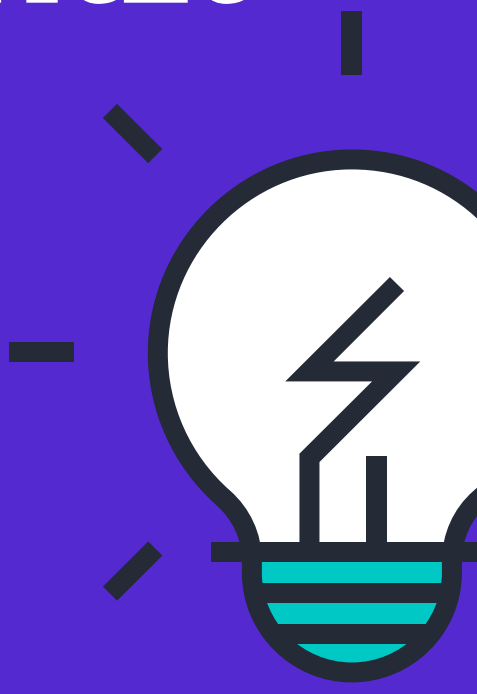
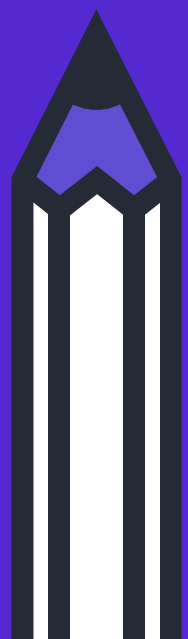


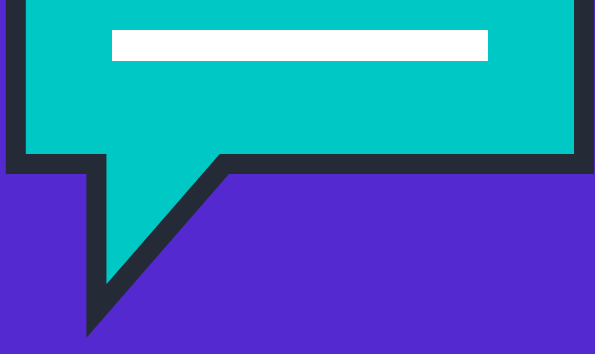
**Yanlış olduğuna kesinlikle emin  
olmadıkça, ilk tahminde  
bulduğunuz cevabınızı  
değiştirmeyin.**



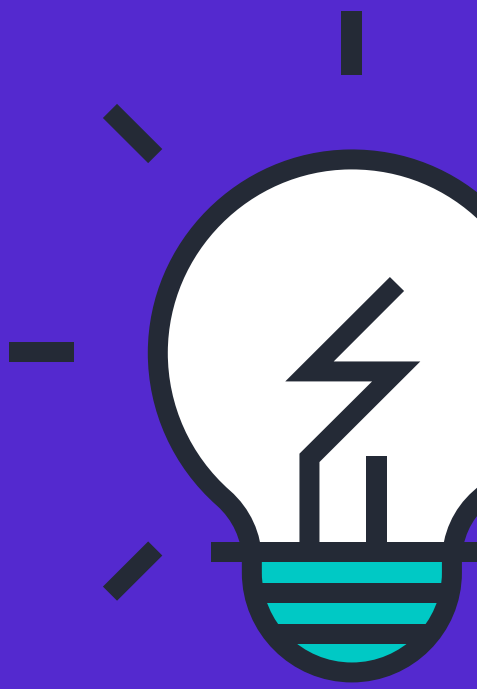
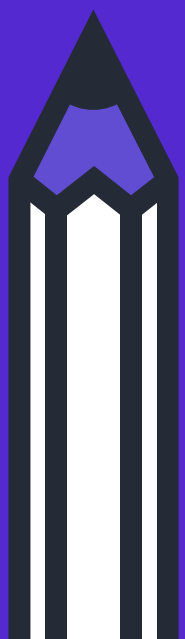
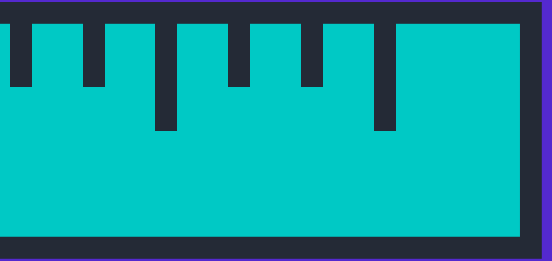


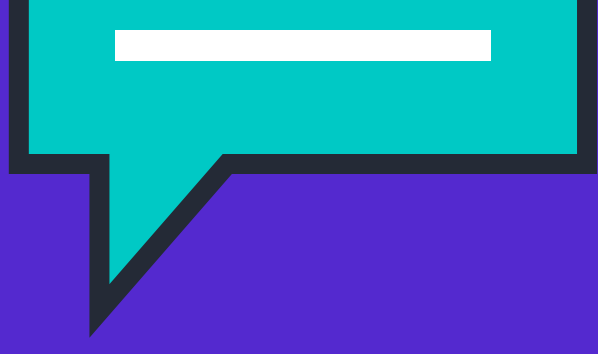
**Sınavda üst üste yapamadığınız sorular olduğunda moraliniz bozulabilir. Bu da dikkatsizlik hataları yapmanıza neden olabilir. Böyle zamanlarda soruların hep böyle olmayacağını, kolay ve zor soruların karışık olarak dizildiğini, belki de bundan sonra birçok soruyu çözebileceğinizi kendinize hatırlatın.**



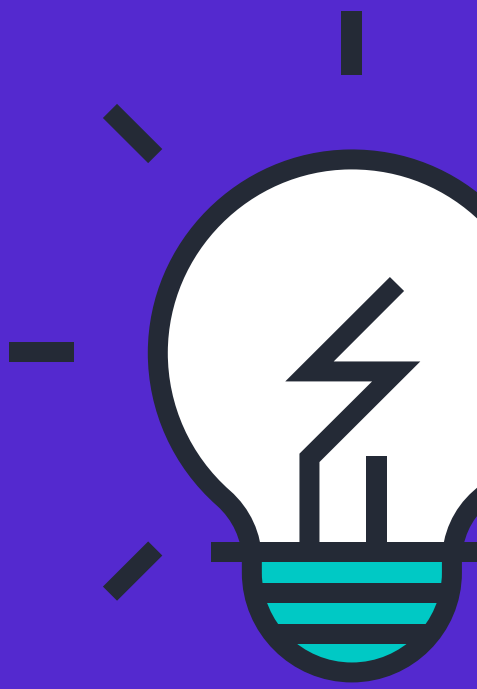
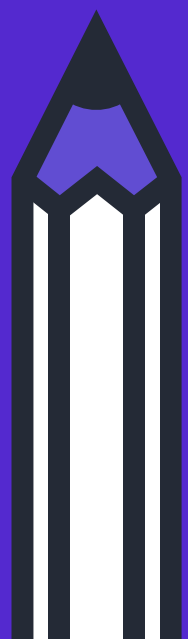
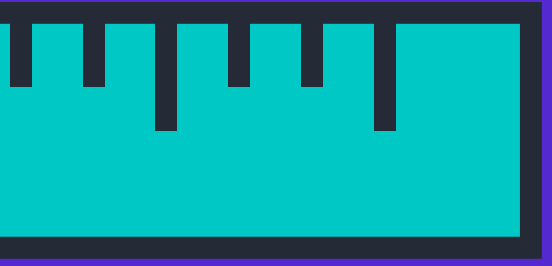


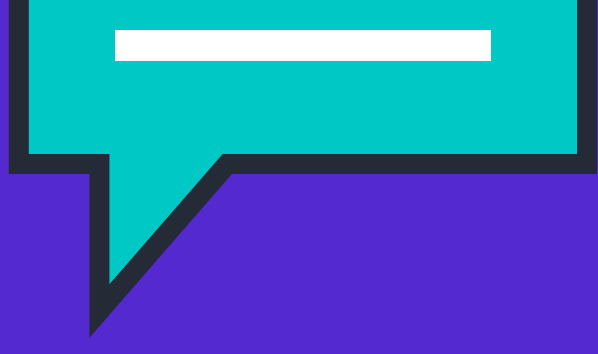
**Uzun paragraftan oluşan soruları "uzun soru zordur" yargısında bulunarak o soruyu okumadan geçmeyin. Paragraf sorularının en önemli özelliği cevabının paragrafın içinde gizli olmasıdır.**



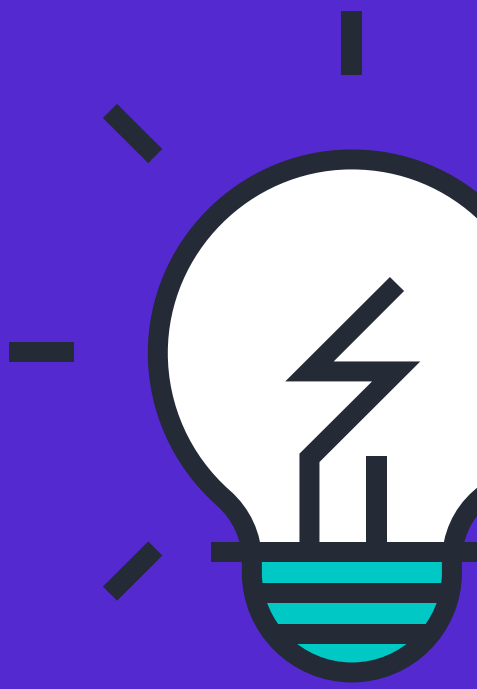
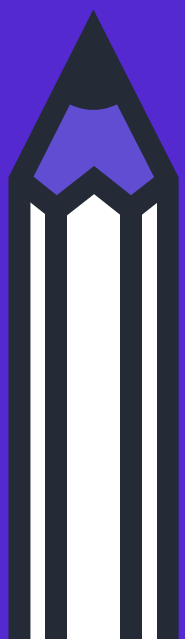
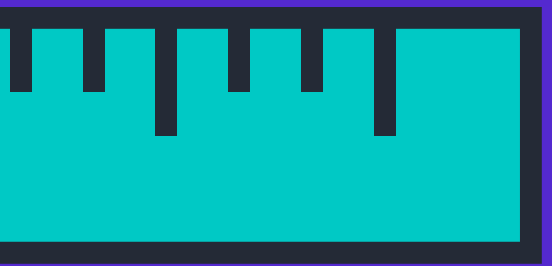


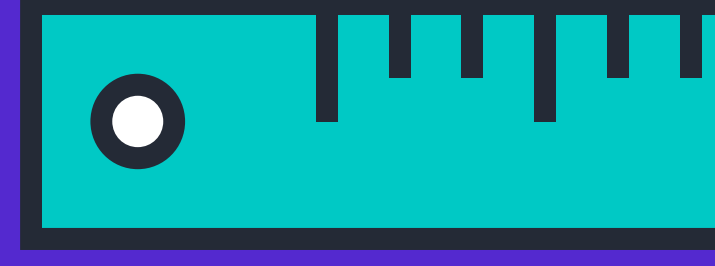
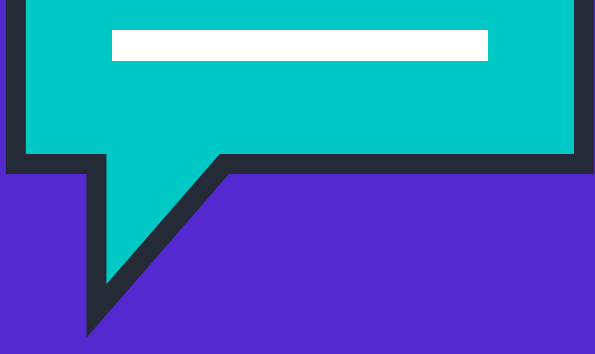
**Dođru cevaba daha kısa sürede ulaşmak istiyorsanız yanlış olduğuna inandığınız şıkları hemen eleyin. Kalan şıklar üzerine düşünün.**



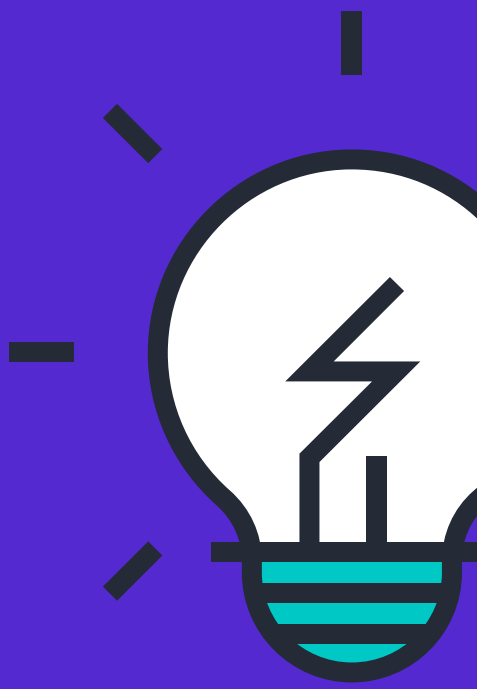
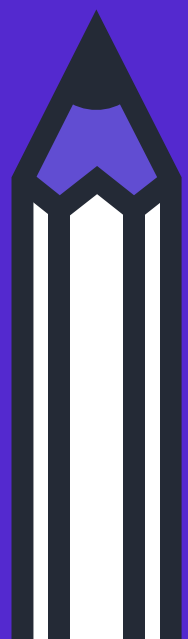
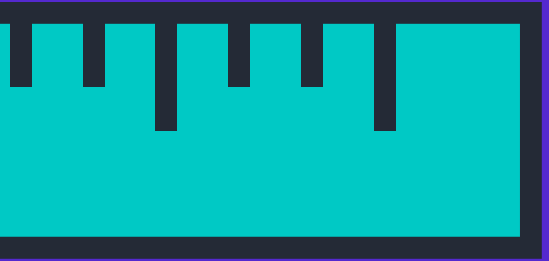


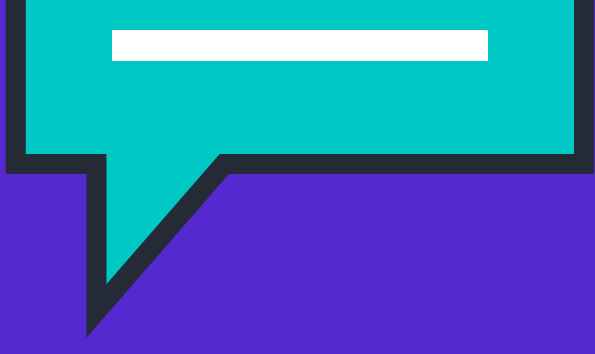
**Önce bildiğiniz soruları  
yapmaktan başlamak daha  
sonra bilemediğiniz bazı  
soruların cevaplarını  
kendiliğinden bulmanızda  
yardımcı olabilir**



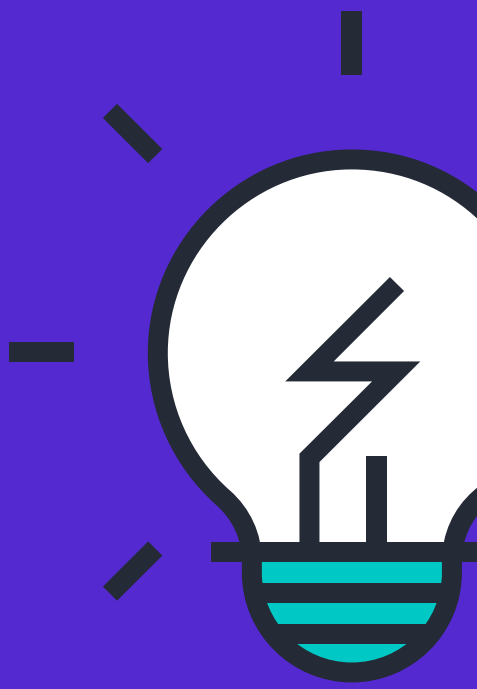
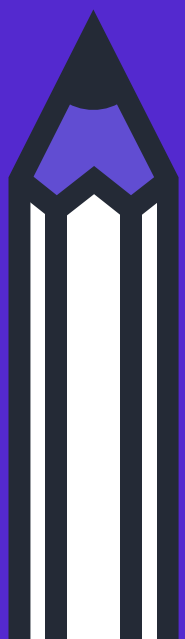
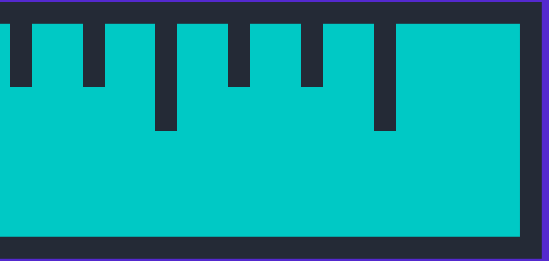


**Çok soru çözmek aynı zaman  
dikkatsizlik hatalarının  
azalmasına yardımcı olur.  
Soruları süre tutarak çözün.  
Çünkü gerçek sınav sadece  
bilginizi değil bilgi kullanma  
hızınızı da ölçmektedir.**

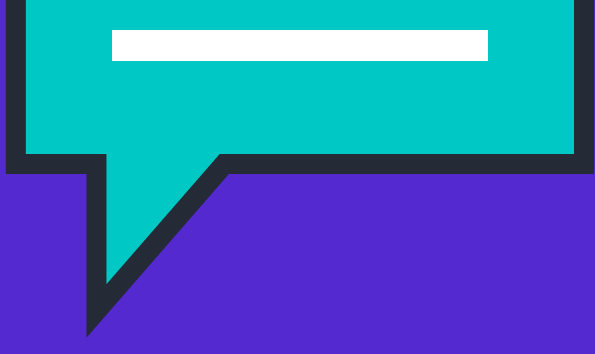




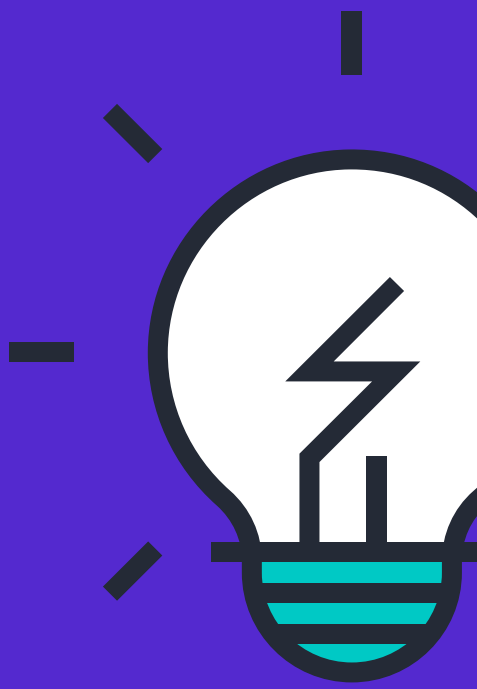
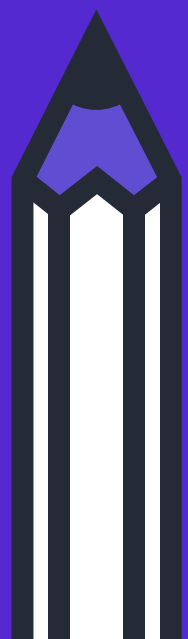
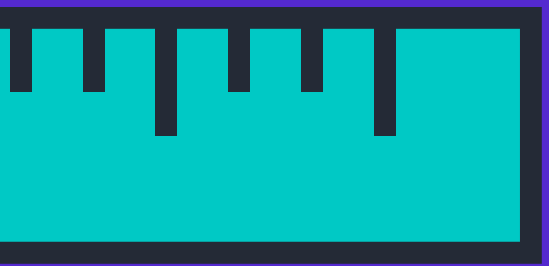
**Test sorularını zamanında  
yetiřtirememe kaygısıyla  
yanıtlamaya kalkmayın. Bu  
durumda, yanıtlayacađınız,  
soruların çođu yanlış  
çıkacaktır. Bunun yerine  
dikkatli ve sakin bir řekilde  
soruları okuyup dođru  
yanıtlamak yararınıza  
olacaktır.**

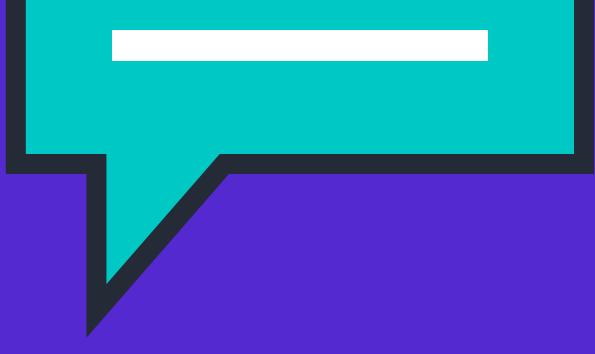




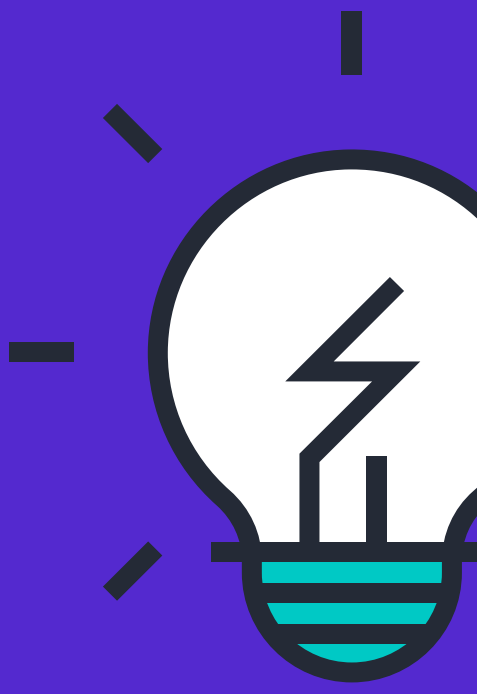
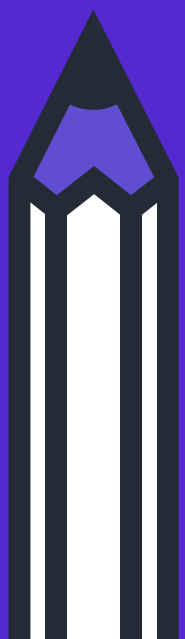
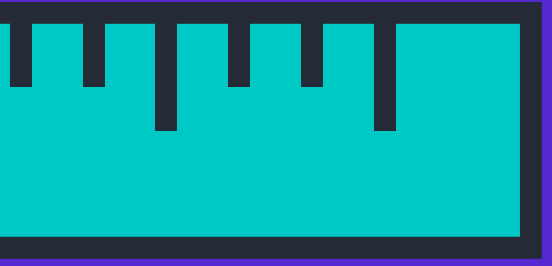


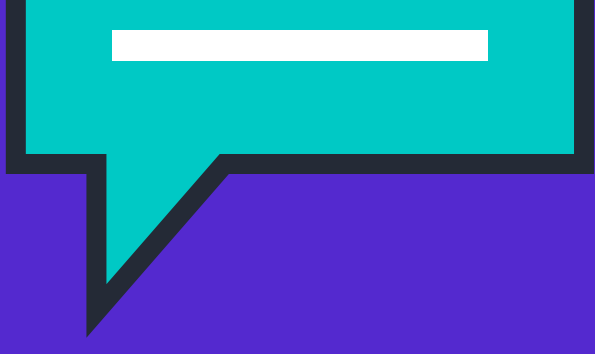
**Önce size verilenleri ve sizden istenenleri iyi belirleyin. Soruya yaklaşırken kendi mantığımızla değil sorunun mantığıyla hareket etmemiz gerekmektedir. Soru kökünün veya soru metninin uzun oluşu sizin için daha fazla ipucu anlamına gelir. Bu nedenle uzun metinli sorular daha kolay çözülebilen sorular olarak düşünülmelidir.**



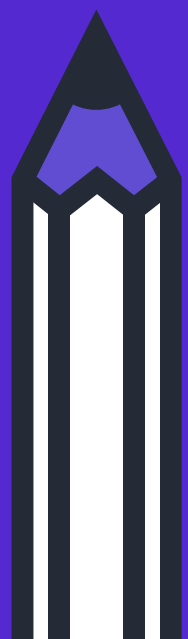
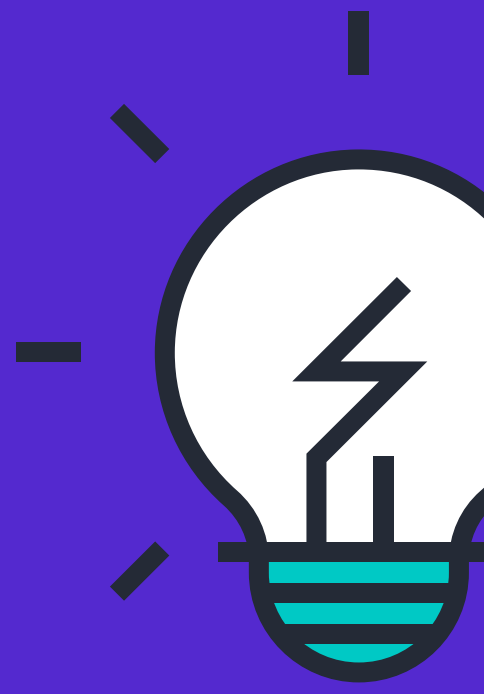
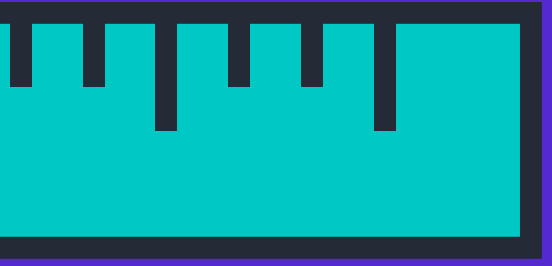


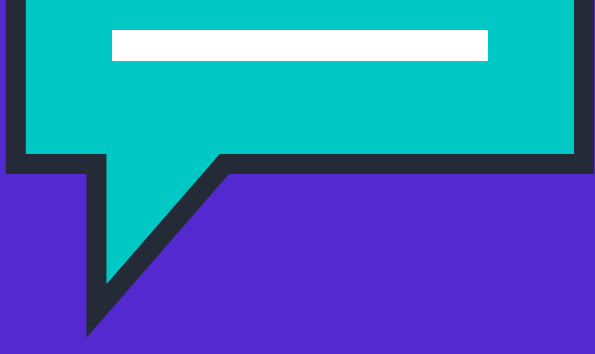
**Her deneme sınavı sonunda  
yanlış yaptığınız soruları  
gözden geçirin. Hangi tür  
soruları yapamadığınızı  
araştırın ve bu tür soruları  
kapsayan testlerden daha çok  
çözün.**





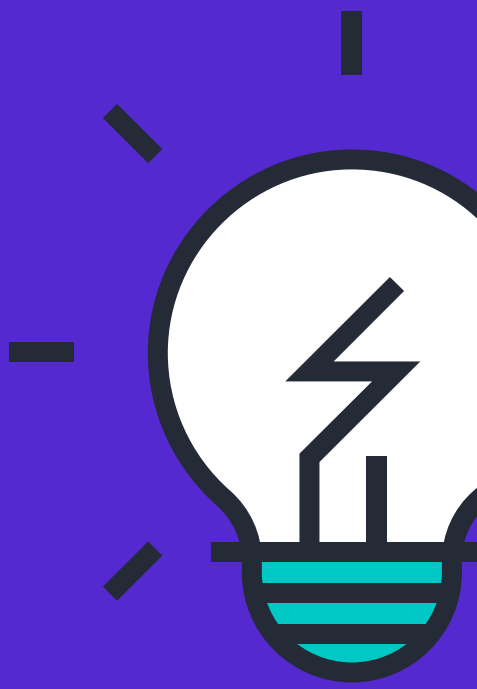
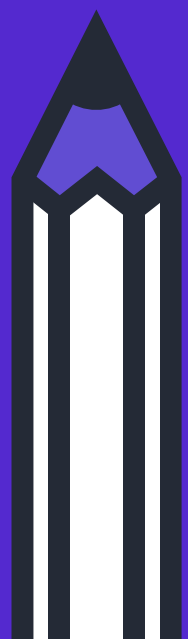
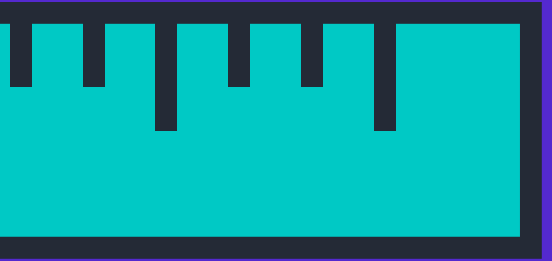
# TEST ÇÖZMEDE EN ETKİLİ ÜÇ MADDE

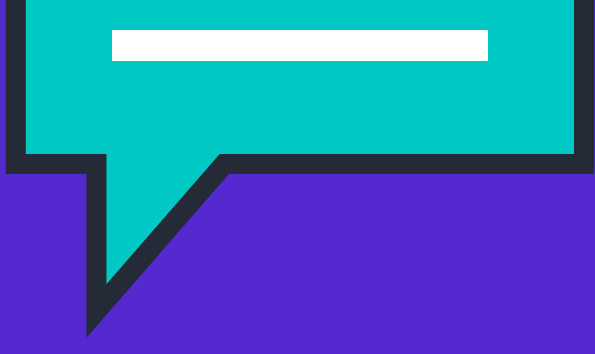




# BİLGİ

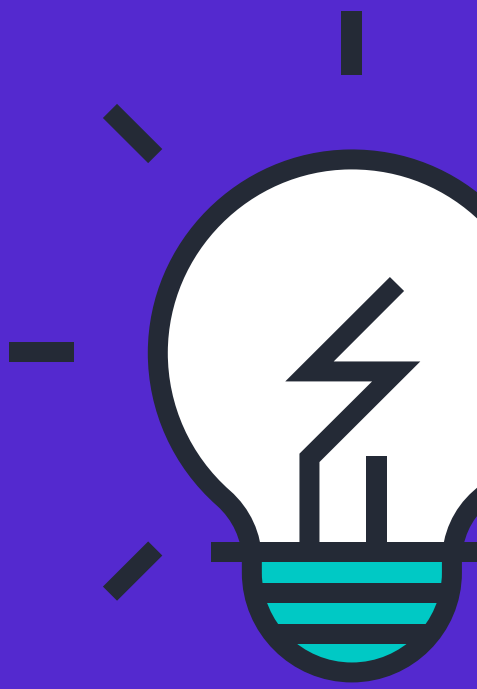
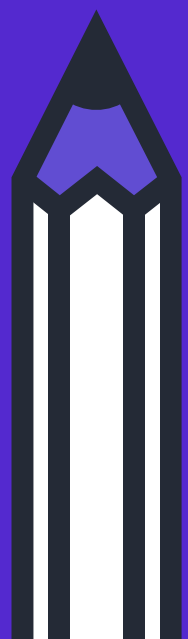
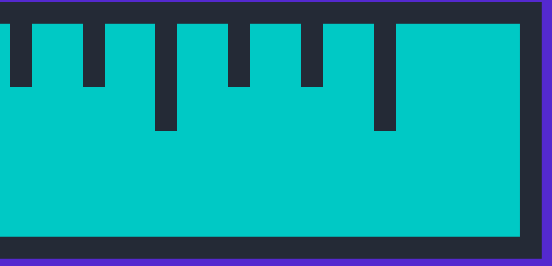
**Derste dersi iyi dinleyerek ve ders çalışılarak elde edilebilir. Tekrar ile pekiştirilir.**

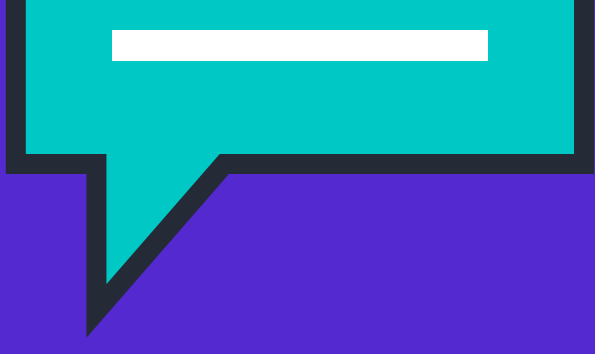




# YORUM

**Öğrenilen ve tekrar ile pekiştirilen bilgi ile ilgili düşünce geliştirme veya bilgiye farklı açılardan bakabilme gücünü ifade eder. Ders dışında test çözerek ve bol bol kitap okuyarak elde edilebilir.**





# HIZ

**Hız ancak ve ancak çok miktarda soru çözümlenerek elde edilir. Her gün belirli miktarda soru çözmeye çalışın. Soru çözmek bir alışkanlık olmalıdır.**

